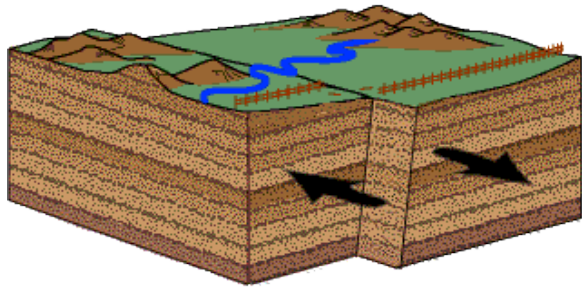


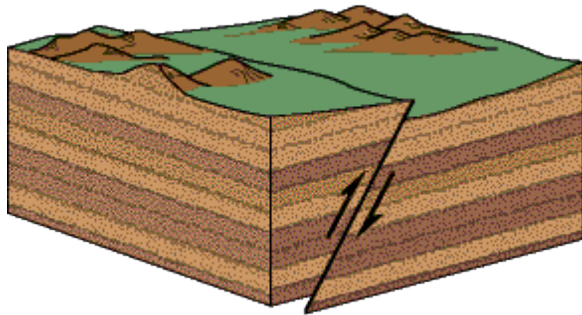
# Last class: Fault models

- 3 types



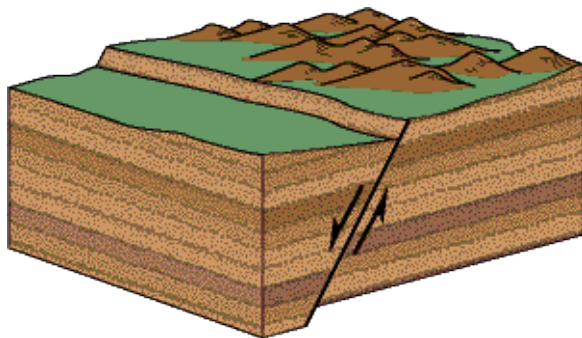
Strike-Slip

Example: San Andreas



Thrust Fault (or Reverse)

Compression



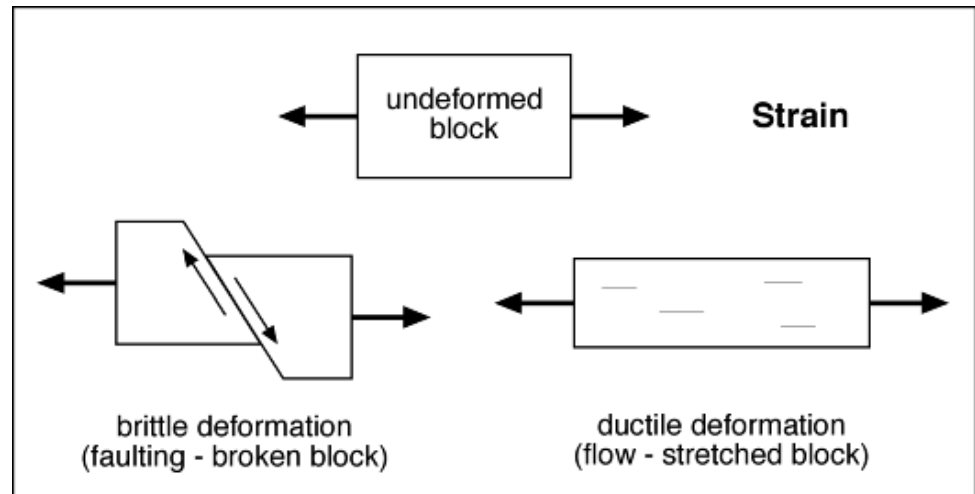
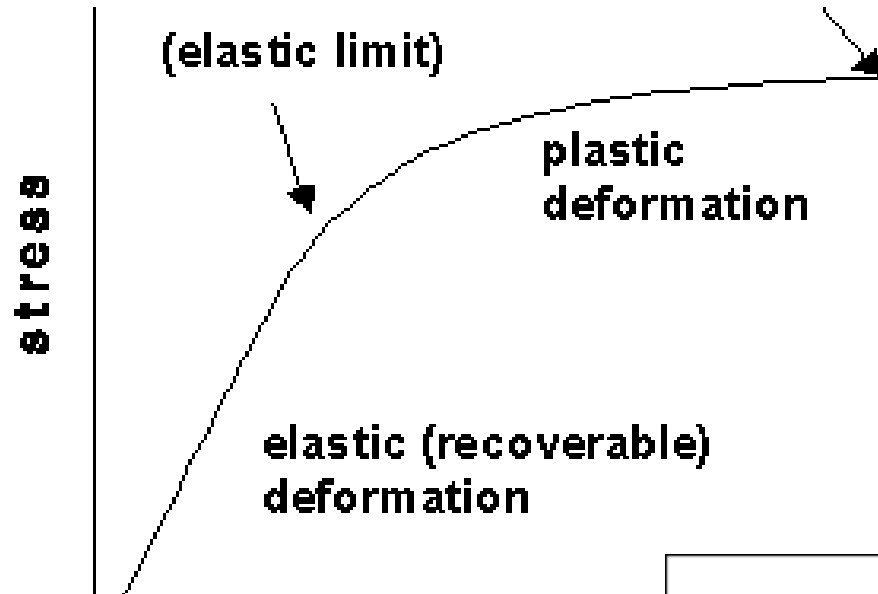
Normal Fault

Extension

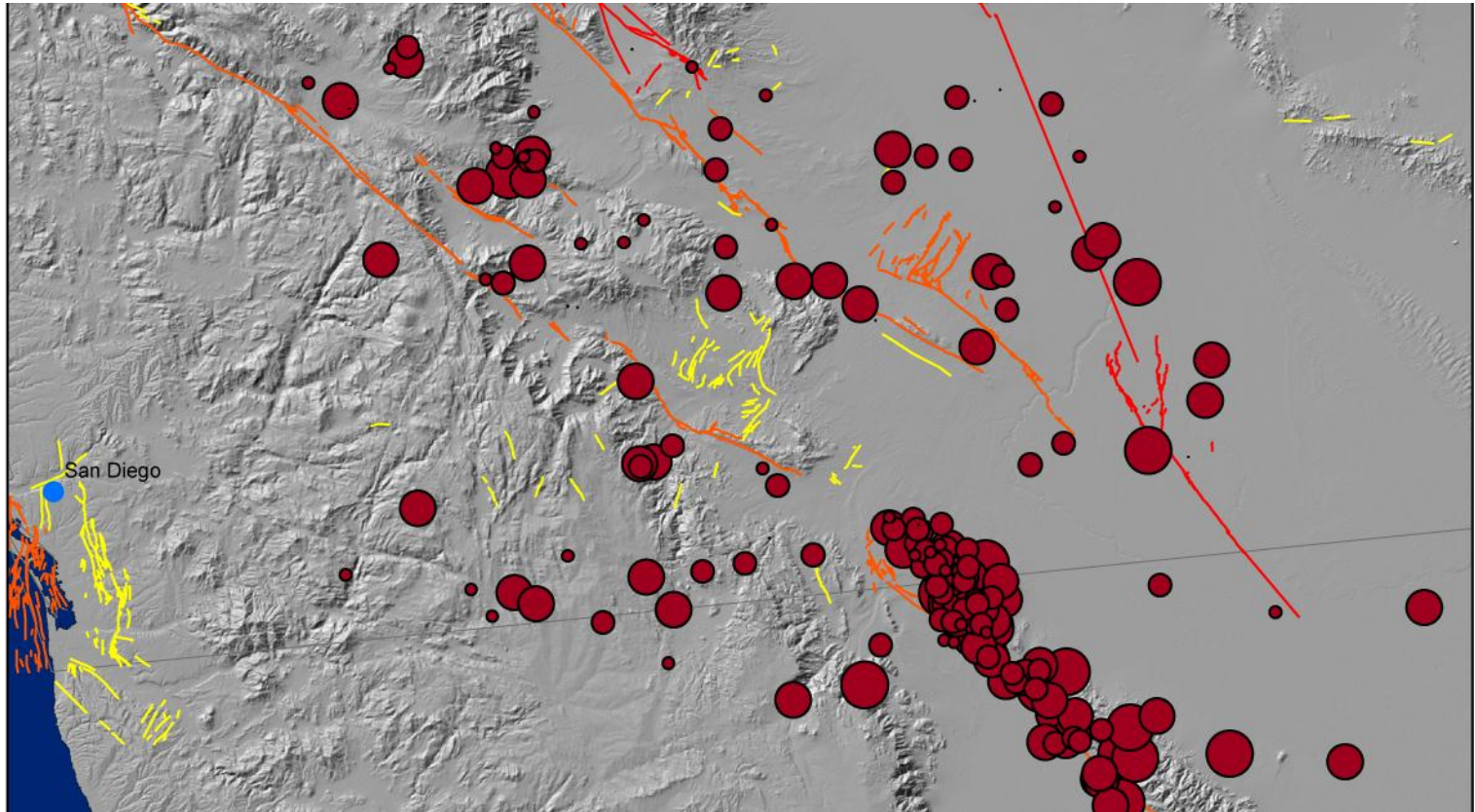
# This class we take a close look at the fault plane itself

- Friction along a fault plane is often uneven and the fault will get “stuck” in places
- At places where the fault is stuck, stress will build up creating multiple earthquakes at different places along a fault
- Foreshocks, main shocks and aftershocks

# Brittle vs ductile deformation

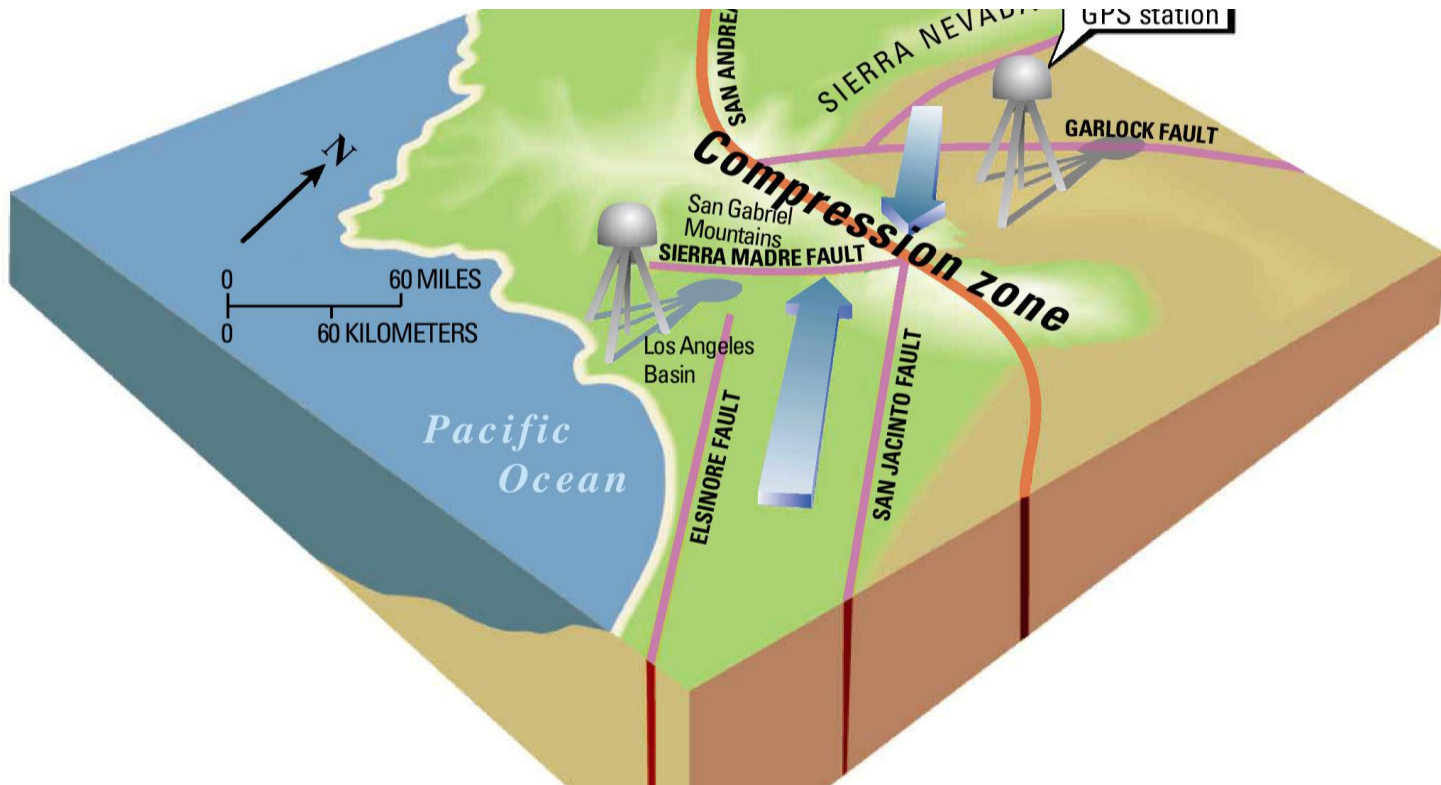


# 7.2 mag. El Mayor Cucapah EQ, April 4, 2010 12 hours after main shock



# California's San Andreas Fault





# Southern California

# Southern California Examples

- <http://www.data.scec.org/significant/index.html>